

WORKING TOGETHER ACROSS COLORADO

Northwest

Eagle
Garfield
Grand
Jackson
Lake
Moffat
Rio Blanco
Routt
Summit
Pitkin

Southwest

Archuleta
Delta
Dolores
Gunnison
Hinsdale
La Plata
Mesa
Montezuma
Montrose
Ouray
San Juan
San Miguel

Metro Area

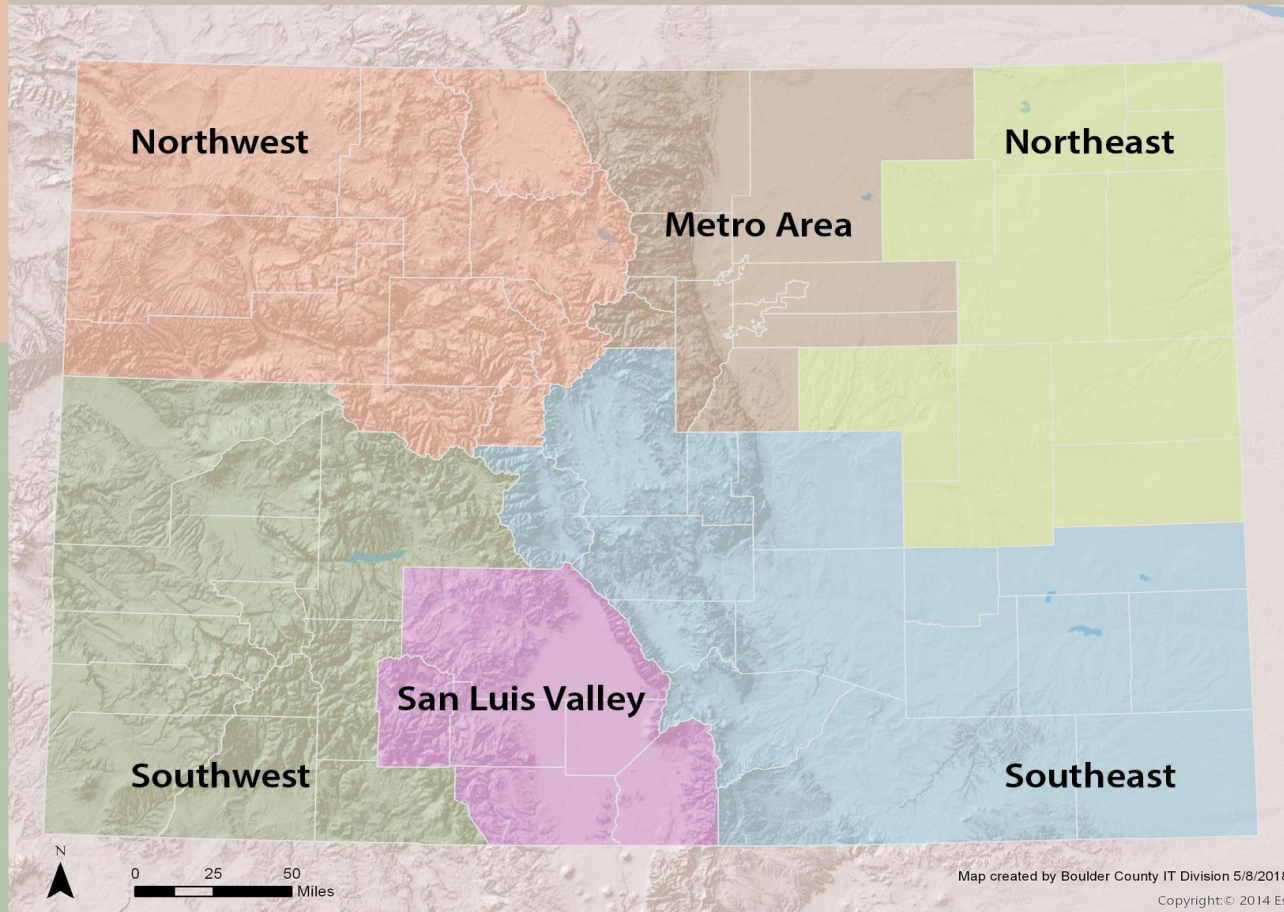
Adams, Arapahoe, Boulder, Broomfield, Clear Creek,
Denver, Douglas, Gilpin, Jefferson, Larimer, Weld

Northeast

Elbert
Kit Carson
Cheyenne
Lincoln
Logan
Morgan
Phillips
Sedgwick
Washington
Yuma

Southeast

Baca
Bent
Chaffee
Crowley
Custer
El Paso
Fremont
Huerfano
Kiowa
Las Animas
Otero
Park
Prowers
Pueblo
Teller



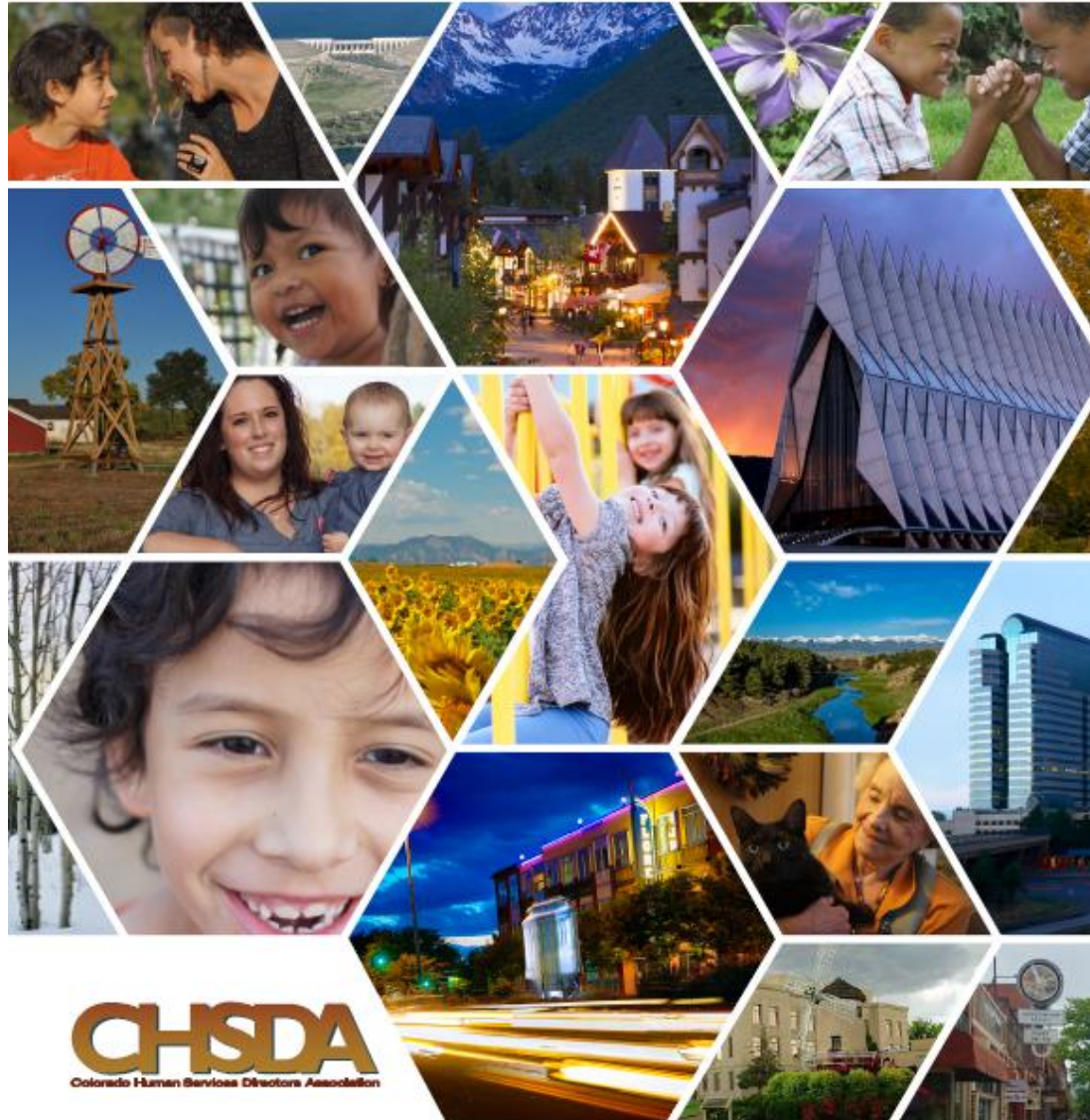
**2020
Legislative
Forum
January 22nd**

Today's Goals

- 1) CHSDA Structure, Priorities and Purpose
- 2) Focus on Strengthening Families and Preventing Child Maltreatment
 - Prevention across all systems
 - Investment in evidence-based programs
 - State-wide alignment to incentives and accountability
- 3) Importance of Interoperability & Coordinated Care
- 4) Critical Investments
 - Implementation of FFPSA and FFTA
 - Child Maltreatment Prevention
 - Early Childhood
 - Behavioral Health and Primary Care
 - Home Visitation
 - Child Care Assistance Program



Counties Building Strong and Healthy Communities Together



CHSDA
Colorado Human Services Directors Association

OUR 7 STRATEGIC PRIORITIES

- 1 CHILD AND FAMILY SERVICES (PAGE 8):**
Investments in prevention and early intervention child welfare strategies and the continuum of care that helps support children and families with the right level of service at all times.
- 2 ADULTS AND AGING (PAGE 9):**
Supports to ensure that at-risk and aging adults are healthy, safe, and thriving in our communities by proactively building integrated, community-based services.
- 3 ECONOMIC WELL-BEING & ACHIEVING SELF-SUFFICIENCY (PAGE 9):**
Effective employment and economic services that help all Coloradans gain economic well being, and break the cycle of crisis and poverty through an active pathway to gainful employment with a livable wage.
- 4 SYSTEMS INTEGRATION (PAGE 10):**
Development of fully seamless and interoperable IT and data management systems that support community-based, whole family care through the integration of benefits administration, case management, and localized support services.
- 5 EARLY CHILDHOOD (PAGE 10):**
Increased access to high quality early childhood programs and services that support healthy child development, family formation, and strong parenting.
- 6 PHYSICAL & BEHAVIORAL HEALTH (PAGE 11):**
Healthy families and healthy communities are created through increased access to care and support for physical, emotional, and behavioral health.
- 7 HOUSING SUPPORTS (PAGE 12):**
Partnership across the state around integrated supports to stably house individuals and families within the community.

Top Two Interlocking Critical Focus Areas

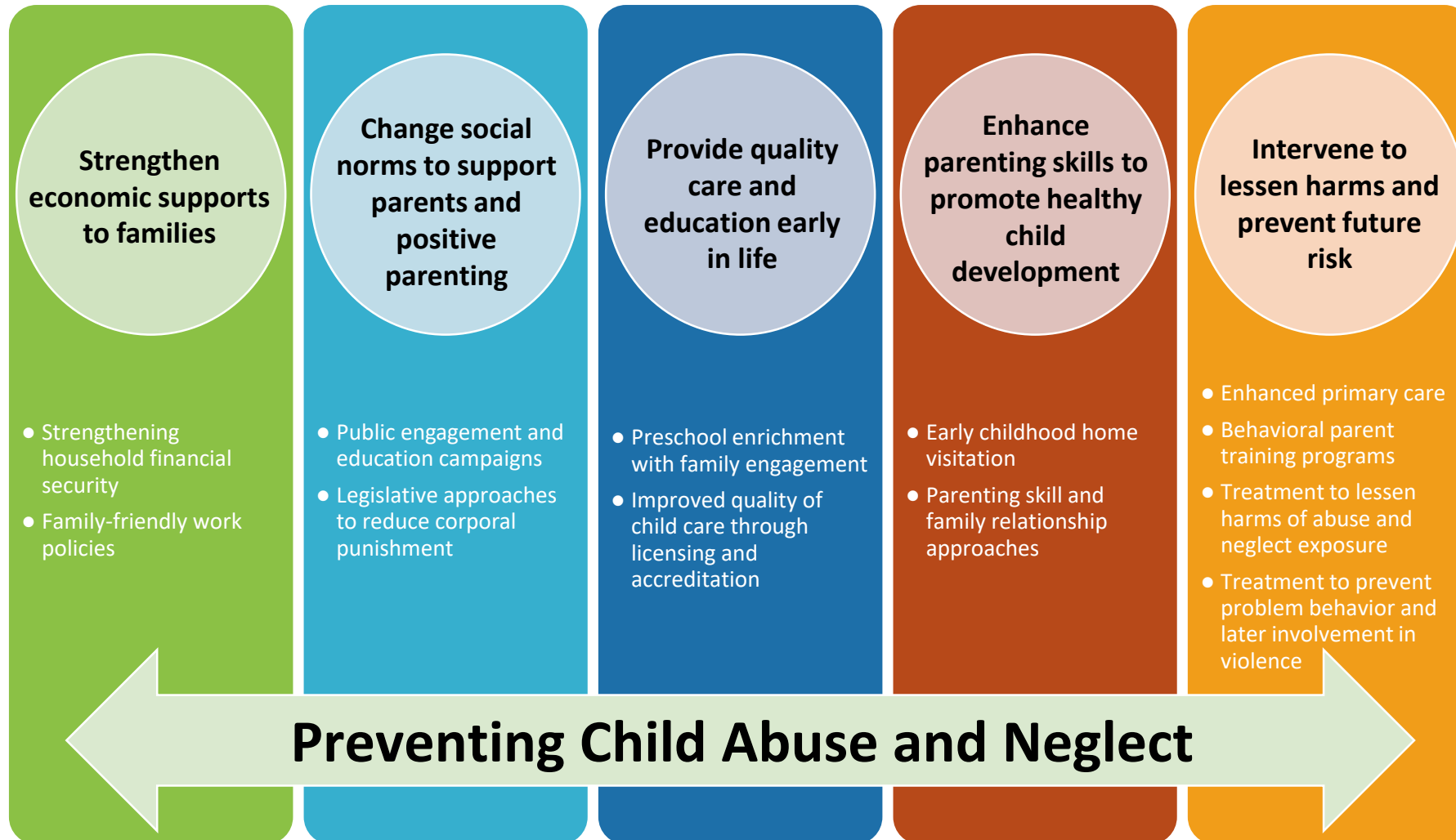


1) Child Maltreatment Prevention Through Early Childhood Investments: Significantly reducing child fatalities and maltreatment 0-5 by positively and proactively supporting strong and healthy family formation.

2) Integration and Interoperability: Serving whole person and family by building the infrastructure for integrated funding, services, and interoperable data management systems.

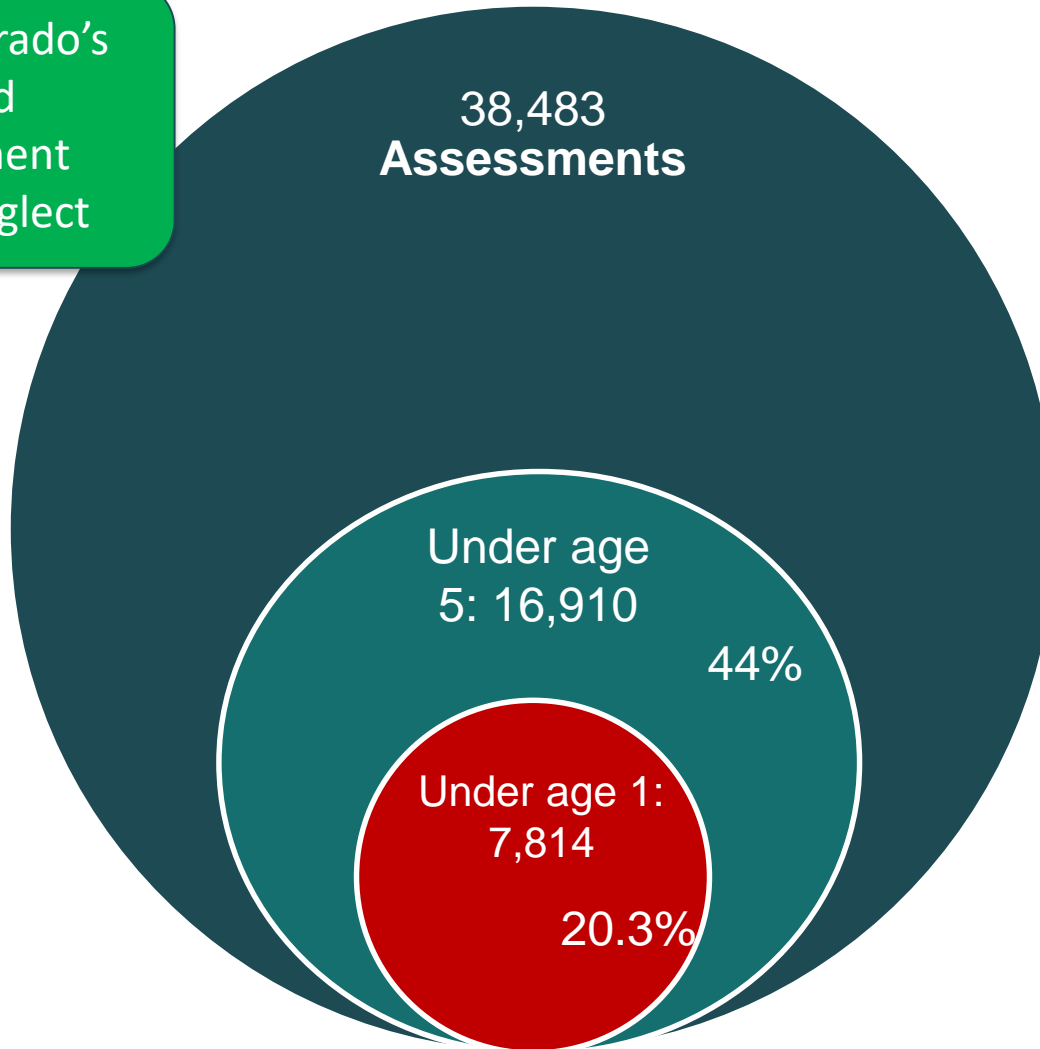


Priority Investment Areas: Strengthening Families, Building Well-Being

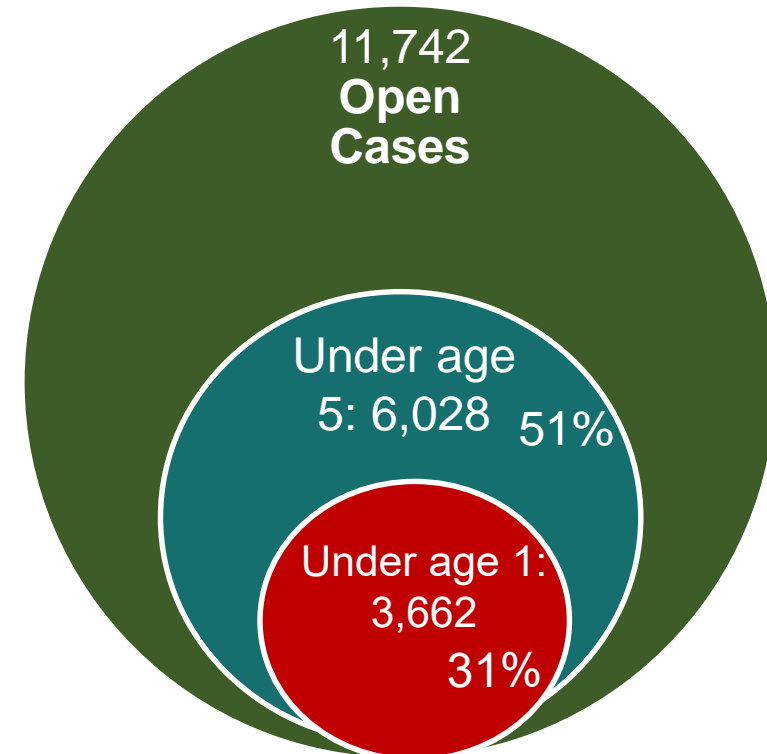


Assessments and Open Cases in Colorado SFY 2017-2018

82% of Colorado's
founded
maltreatment
involves neglect



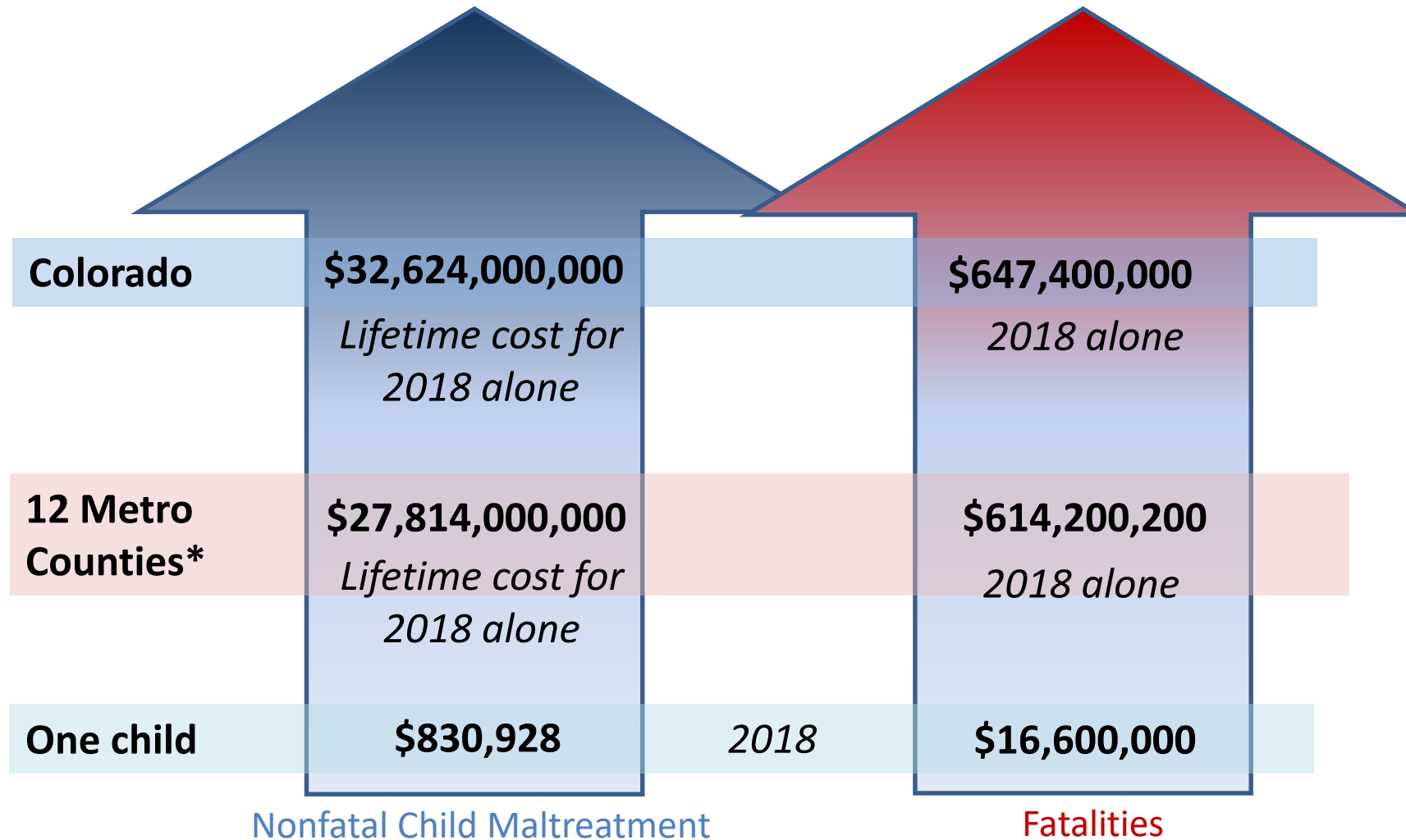
109,795 Total Referrals
32.6% Under age 5
12.9% Under age 1



Economic Burden of Child Maltreatment

=

\$484 billion to
\$2 trillion *per year*



U.S. Data

**based on data from
Center for Disease
Control and Prevention*

*12 Metro Counties : Adams, Arapahoe, Boulder, Broomfield, Denver, Douglas
El Paso, Jefferson, Larimer, Mesa, Pueblo, Weld

Priority Investment Areas: CCCAP

Priority Investment Area – Child Care Assistance Program

Colorado has made significant investments to pay for high quality child care services and it is time to increase access to the program statewide.



Higher Rates
for Quality
Settings

Improved
Access w/
Additional
Resources

Market
Driven Rates
Empowered
Provider
Participation

Child
Protection
Link

School
Readiness

Priority Investment Areas: Early Childhood and Child Welfare

Preventing Child Abuse and Neglect and Reducing Educational Disparity



Priority Investment Areas: Behavioral Health

Behavioral Health Task Force

Enhanced
primary care
and behavioral
health
coordination

Treatment to
prevent substance
use disorders and
later involvement
in violence

**Intervene to
lessen harms
and prevent
future risk**

Parenting
Support
programs

Treatment to
lessen harms of
abuse and
neglect
exposure, child
trauma



**Build a Comprehensive Vision for Strong and Thriving Families and Communities
Where Children Are Free From Harm (Reduction of Maltreatment Statewide)**

Develop Funding for Primary Prevention Across
Multisector Systems

Implement Practices to Reduce Overall Involvement
in Child Protection



Establish Effective Systems of Families Likely to Be Candidates (Targeted Prevention)

Develop Funding for Secondary Prevention Across
Systems

Effectively Utilize Candidacy Definition to Maximize
Secondary Prevention Funding and Practice



Provide Effective Treatment Once Child Abuse and Neglect Has Occurred

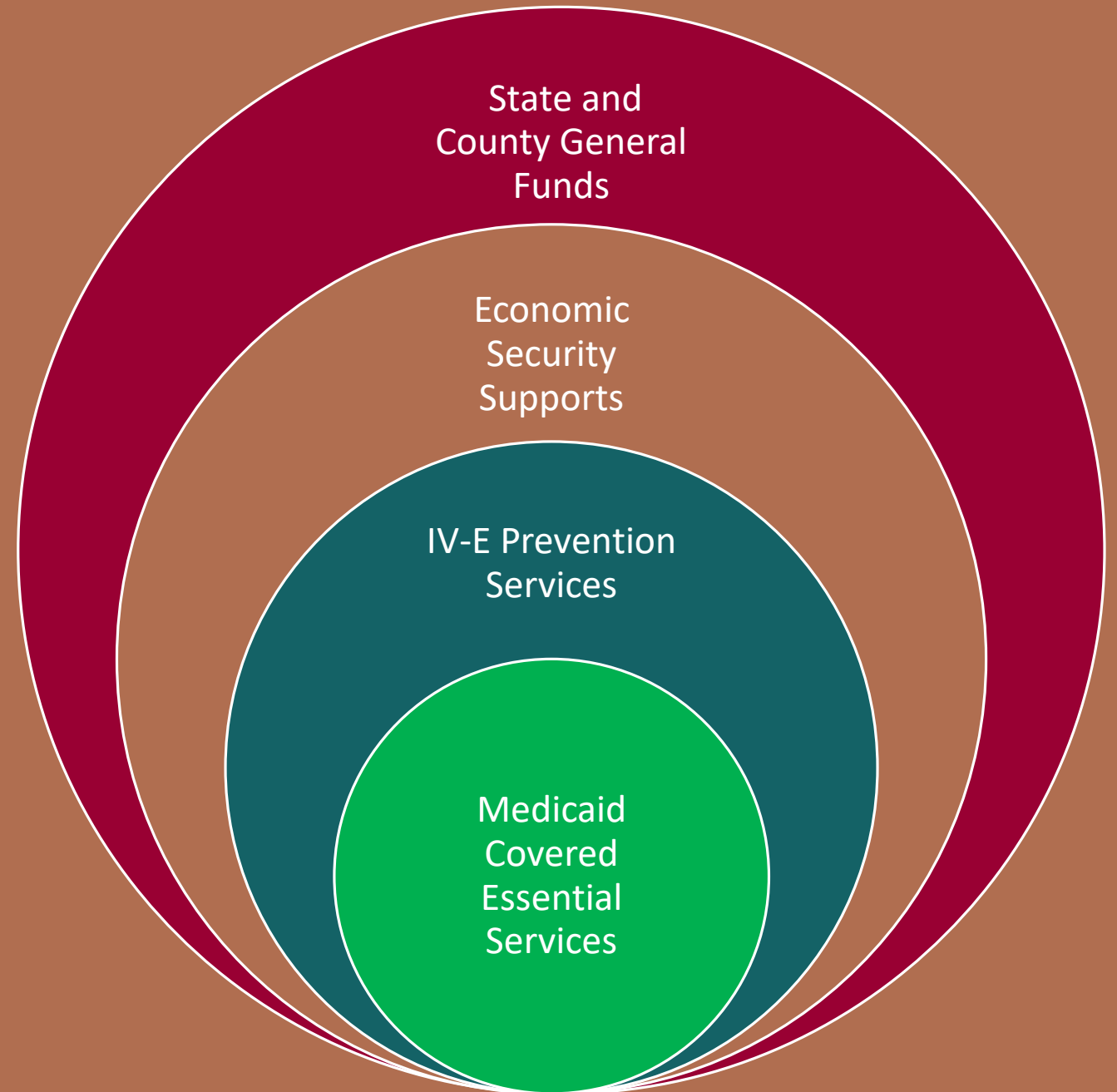
Develop Methodologies for Funding Tertiary
Prevention

Ensure Effective Alternative Permanency Strategies in
Event of Removals and Terminations

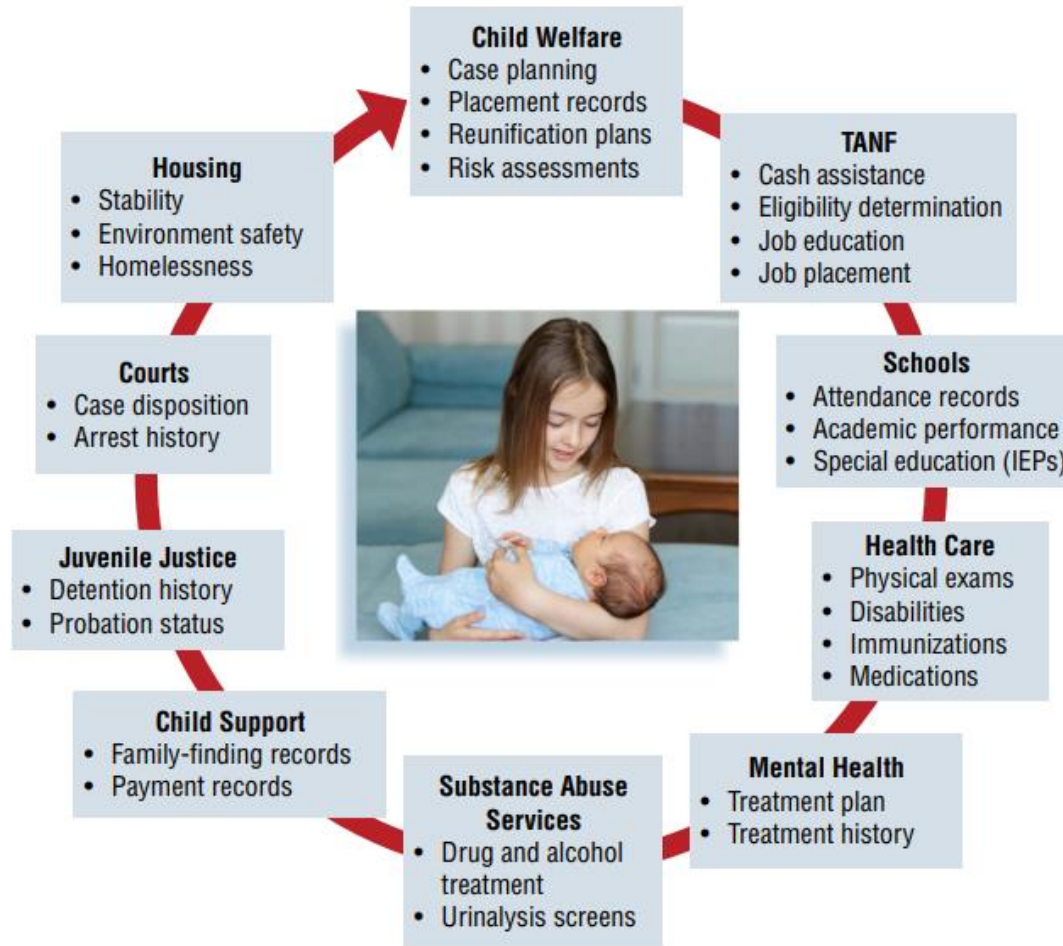
Developing A Strategic Child Welfare Funding Model Post IV-E Waiver

Critical Elements:

- Develop a Strong Multi-Layered Strategy
- Target Primary, Secondary and Tertiary Prevention
- Build Multisector Partnerships Under Common Vision
- Maximize Medicaid Reimbursements for effective practices
- Understand Incentives under IV-E Prevention
- Maximize Economic Security Supports
- Utilize State and Local Resources to build capacity in effective practices and maximize funding

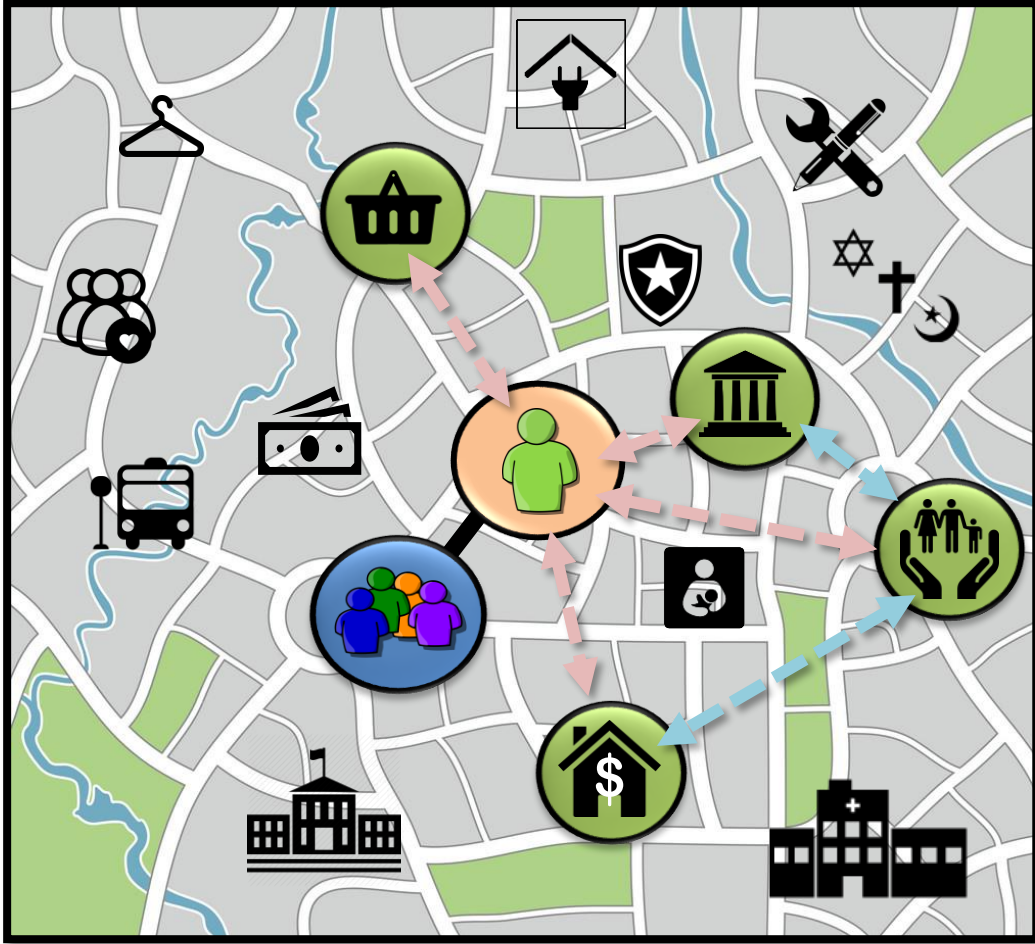


Integrated Systems of Care and Data Interoperability Can Improve Outcomes: Driven by U.S. HHS



https://www.acf.hhs.gov/sites/default/files/cb/guide_to_dddm.pdf

Opportunities for Interoperability



Connect Across Silos

- Health/Medical Providers
- Government (Human Services, Public Health)
- Non-Profit, community-based organizations
- Across counties and communities

Public Health Approach

- Examine population risk and need factors across all social determinants of health and health data

360° Coordination

- Enable coordination between all providers and with clients through integrated software tools

Discussion and Partnership Opportunities



- Strengthening Primary Prevention Efforts and intensify focus on needs of very young children
- Focus intentional investments in transition to Family First
- Enhance funding and service coordination across state agencies
- Focus on long-term outcomes: community well-being, education, income & employment, housing, ACEs/maltreatment reductions
- Developing a long-term, sustainable funding model that incentivizes child and family well-being