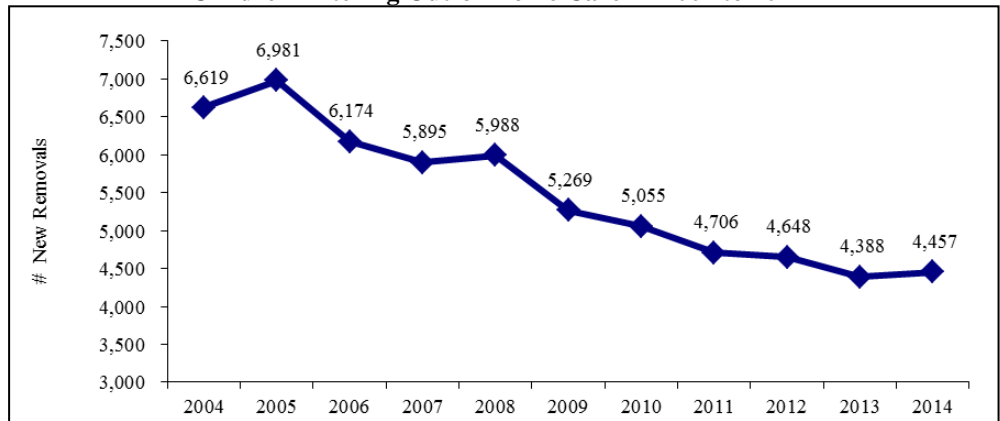


- The number of children entering out-of-home care has been reduced by **33%** from 2004 to 2014.
- The percentage of new children opened to a case for services that also had out-of-home (OOH) placement has reduced from **47%** of new children opened in 2004 to **37%** of new children opened in 2014.
- In 2014, **84%** of children opened for in-home services were safely maintained in the home without the need for out-of-home placement.
- In 2013, **91%** of children who were closed from an ongoing child protection case did not experience a new case involvement within one year.
- In 2013, **94%** of children who were closed from an ongoing child protection case did not experience a subsequent abuse or neglect finding within one year.

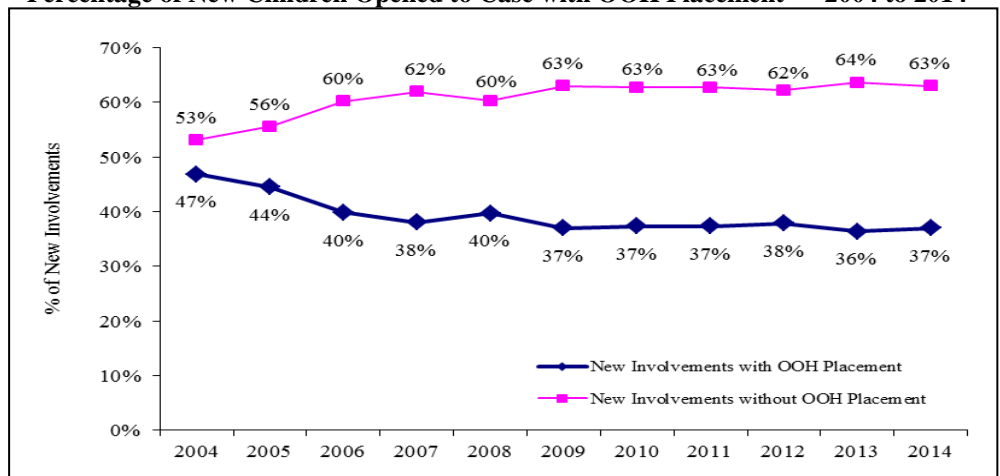
**CHILDREN ARE SAFELY MAINTAINED AT HOME**

An important safety outcome of the federal Children and Family Services Review (CFSR) is children being safely maintained in the home whenever possible. The trend in Colorado’s child welfare practice is consistent with this goal as more services are being geared toward protecting children in their home and avoiding entry into out-of-home placement whenever possible. The number of children entering out-of-home care has been reduced from **6,619 in 2004 to 4,457 in 2014** – a reduction of **33%**. Likewise, the percentage of new children entering out-of-home placement relative to all new children opened to a case for services has dropped from **47%** of all new involvements in 2004 to **37%** of new involvements in 2014.

**Children Entering Out-of-Home Care\* – 2004 to 2014**



**Percentage of New Children Opened to Case with OOH Placement – 2004 to 2014**



Source: Trails data.

Note: \*Children removed from home for 3 days or more

As practice has shifted, the goal still remains that children are, first and foremost, protected from future maltreatment.

- **84%** of children who were opened to a case for in-home services in 2014 were successfully maintained in the home throughout the duration of the case without the need for out-of-home placement.
- **91%** of children who were closed from an ongoing child protection case in 2013 did not experience a new case involvement within one year.
- **94%** of children who were closed from an ongoing child protection case in 2013 did not experience a subsequent abuse or neglect finding within one year.